

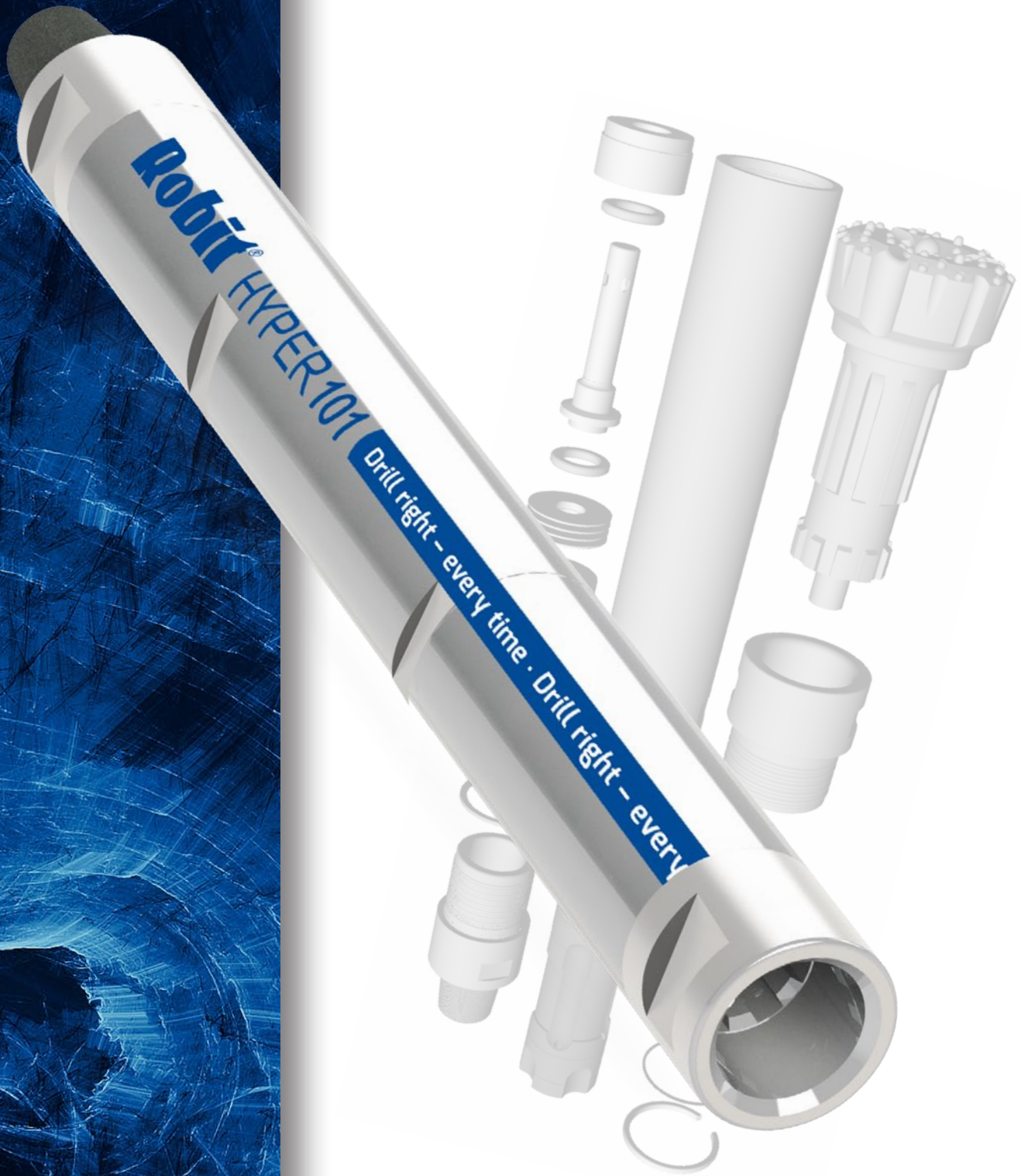
Robit[®]

LARGE DOWN THE HOLE PILING HAMMERS



FURTHER. FASTER.

HYPHER 101 DTH HAMMER



Technical Specification

Robit® HYPER 101

Valveless Hammer 254 mm (10") - 305 mm (12") dia. Holes

The Hyper 101 Hammer is designed to operate over a wide range of operating air pressures. A 6⁵/₈" API reg. pin backhead is supplied as standard. The Hyper 101 is fitted with a positive seating water check valve and is supplied as standard fitted with a solid choke. The Hyper 101 is designed to accept button bits with a N100 shank. However, the Hyper 101 can be supplied to accept the SD10 type of button bit.

Component parts

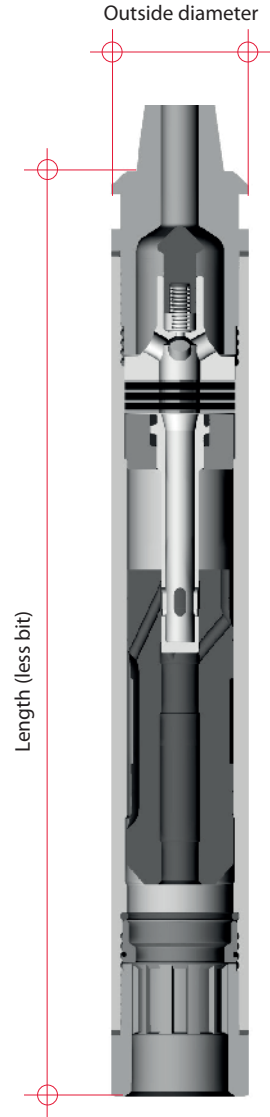
Ref	Description	Part number
1	Backhead	HSH1013880M
2	Check valve	HSH10108
3	Check valve spring	HSH10110
4	Diverter	HSH10120
5	Compression buffer	HSH10128
6	Control tube holder	HSH10131
7	Control tube buffers (2)	HSH10129
8	Control tube	HSH10130
9	Piston	HSH10103053
10	Wearsleeve	HSH10100
11	Piston retaining ring	HSH10132
12	Bit retaining ring	HSH10137053
13	Bit retaining ring 'O' ring	HSH10137A046
14	Chuck	HSH10135053
15	Breakout washer	HSH10126
Complete Hammer		BR101H01

Air consumption (Pressure at Compressor)

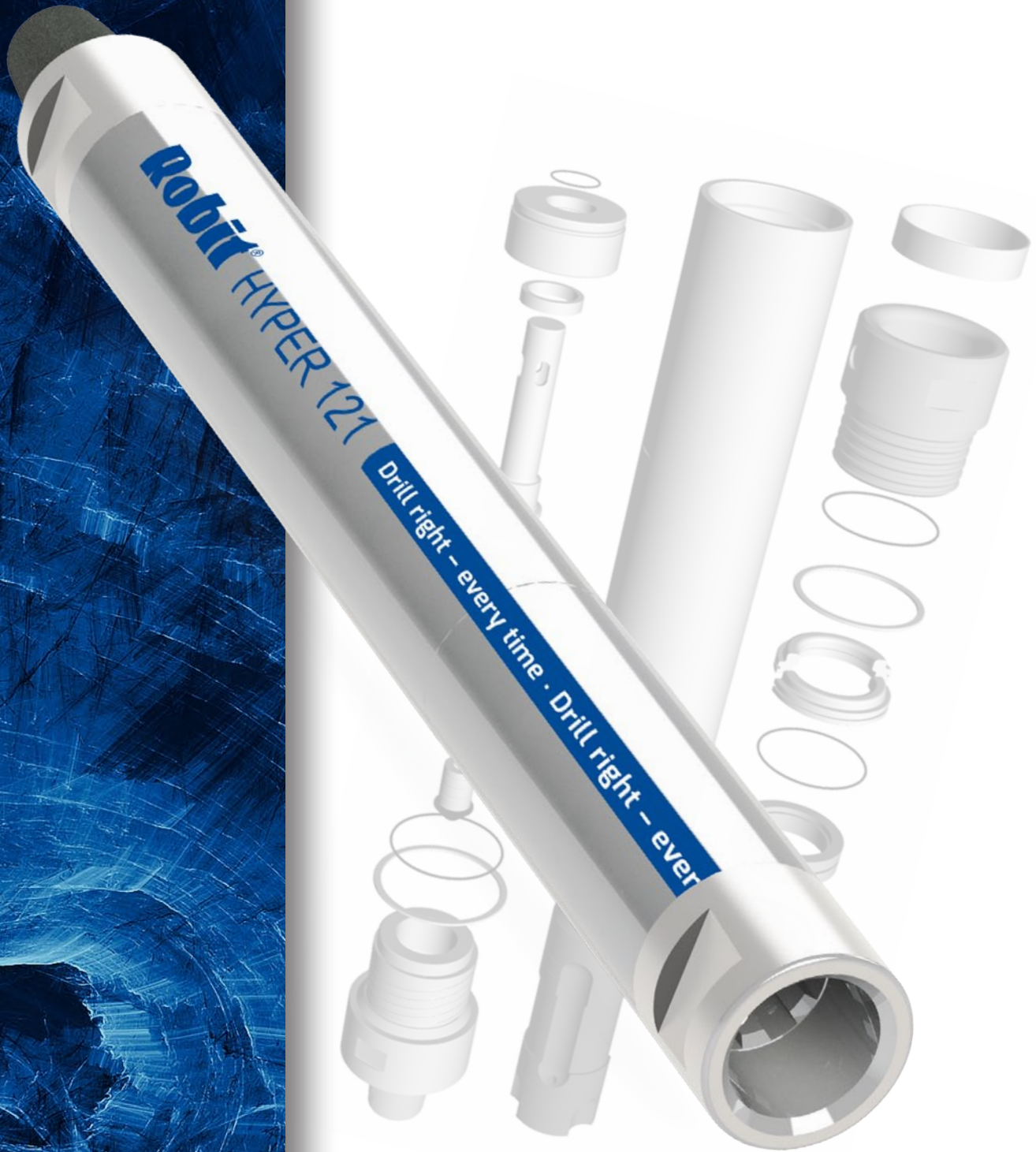
PSI	BAR	m ³ /min	ft ³ /min
100	6.9	10.36	365.70
125	8.6	14.47	511.08
150	10.3	19.02	671.83
175	12.0	23.97	846.61
200	13.8	29.29	1034.35
225	15.5	34.95	1234.24
250	17.2	40.93	1445.55
275	19.0	47.23	1667.72
300	20.7	53.81	1900.23

Hammer specification

	Imperial	Metric
Weight (less bit)	745 lbs	338 kg
Length (less bit)	62"	1575 mm
Outside dia.	8.86"	225 mm
Piston weight	150 lbs	68 kg



HYPHER 121 DTH HAMMER



Technical Specification

Robit® HYPER 121

Valveless Hammer 302 mm (11⁷/₈") - 445 mm (17¹/₂") dia. Holes

The Hyper 121 Hammer is designed to operate over a wide range of operating air pressures. A 6⁵/₈" API reg. pin backhead is supplied as standard. The Hyper 121 is fitted with a positive seating water check valve and is supplied as standard fitted with a solid choke. In addition to the standard N120 button bit, the hammer can easily be modified to accept button bits with Mission SD12 and Ingersoll Rand DHD112 shank design.

Component parts

Ref	Description	Part number
1	Backhead	HSH1213880M
2	Backhead / Chuck 'O' Ring (2)	HSH12114
3	Check Valve	HSH12108
4	Check Valve Spring	HSH12110
5	Diverter	HSH12120
6	Compression Buffer	HSH12128
7	Control Tube Holder	HSH12131
8	Control Tube Buffers (2)	HSH12129
9	Control Tube 'O' Ring	HSH12130A
10	Control Tube	HSH12130
11	Piston	HSH12103050
12	Wearsleeve	HSH12100
13	Piston Retaining Rings (2)	HSH12132
14	Bit Bearing	HSH12187
15	Bit Retainer (pair)	HSH12137050
16	Bit Retainer 'O' Ring	HSH12137AST
17	Chuck	HSH12135050
18	Chuck Bearing	HSH12135050BE
19	Breakout washer backhead	HSH12126
20	Breakout Washer chuck	HSH12125

Complete Hammer

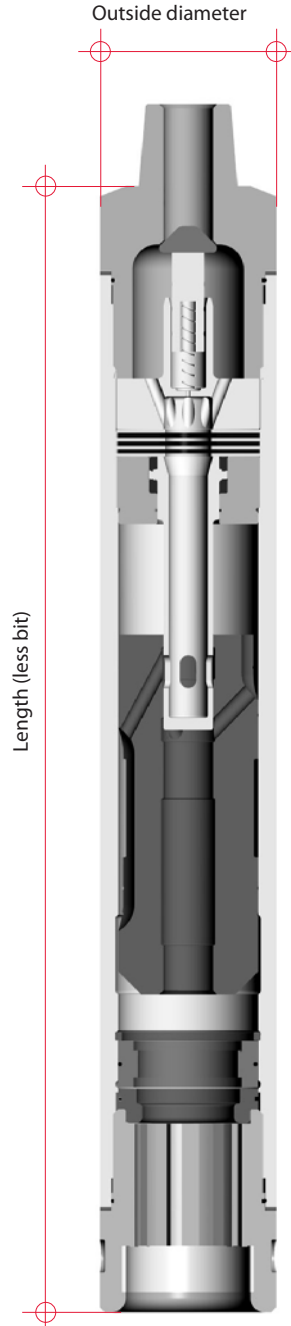
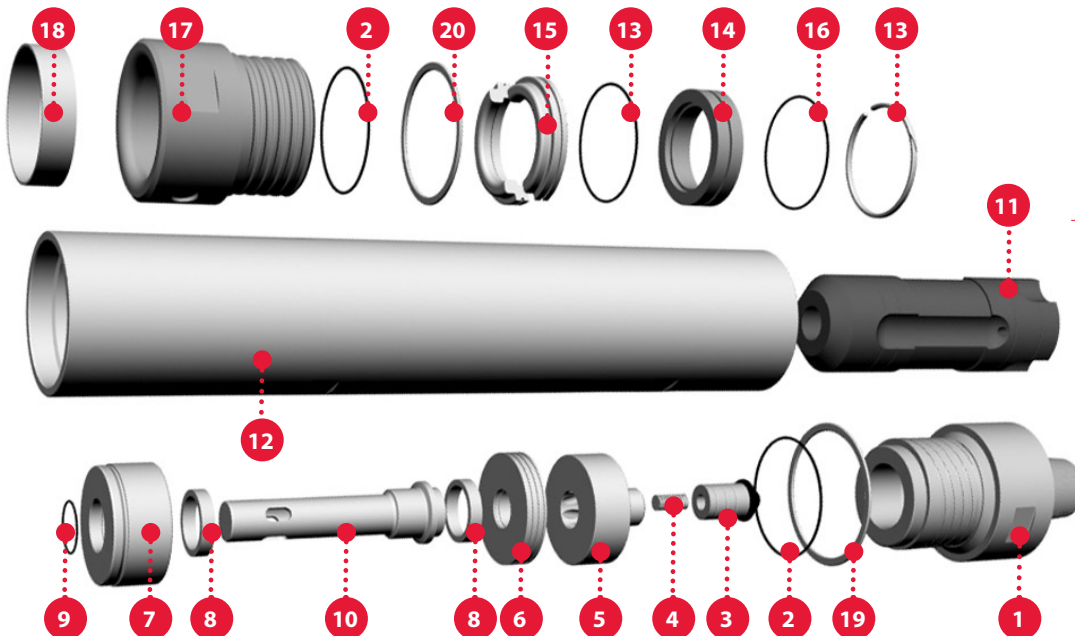
BR121H01

Air consumption (Pressure at Compressor)

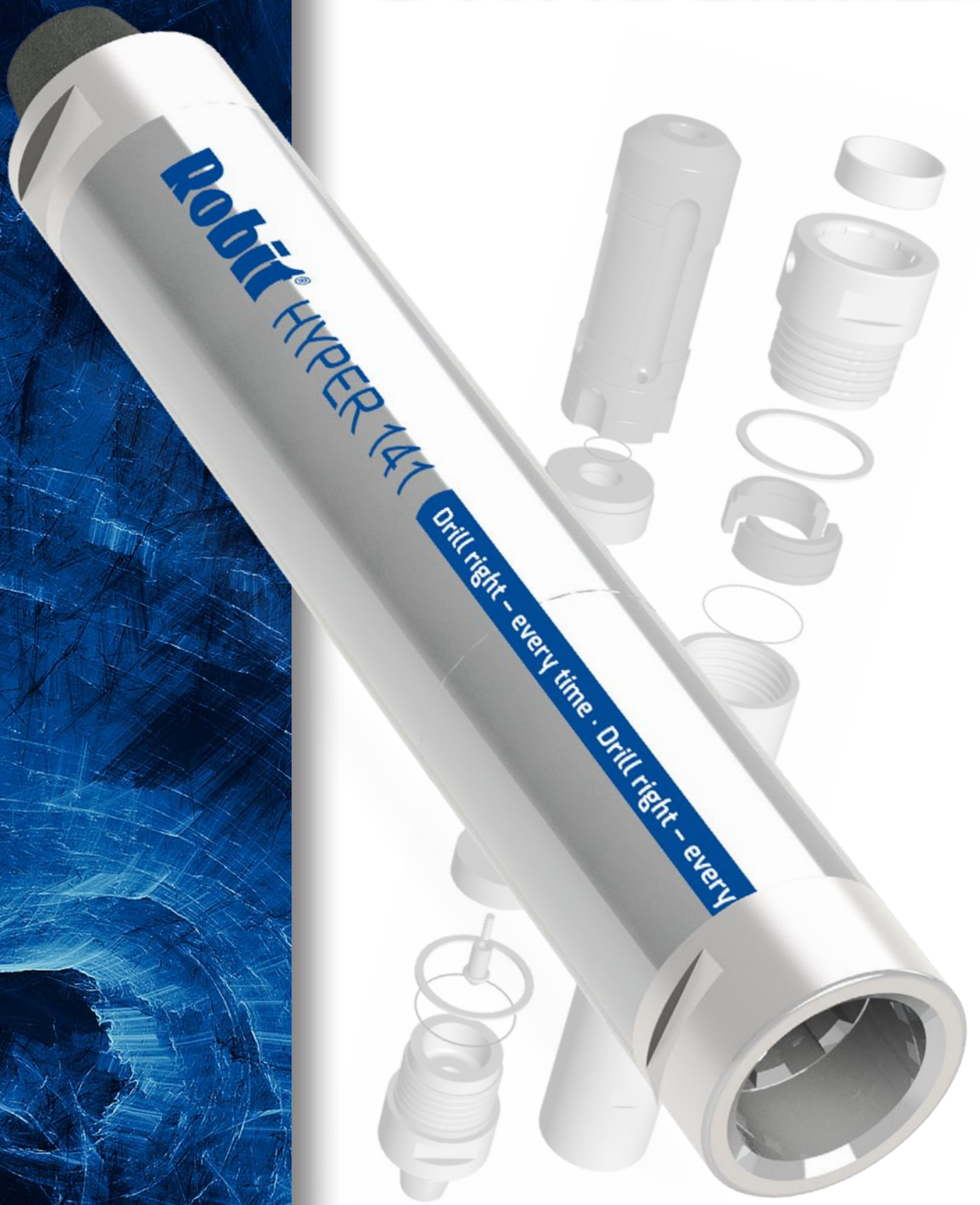
PSI	BAR	m ³ /min	ft ³ /min
100	6.9	16.8	592
150	10.3	30.8	1087
200	13.8	47.4	1674
250	17.2	66.2	2338

Hammer specification

	Imperial	Metric
Weight (less bit)	1487 lbs	675 kg
Length (less bit)	74.4"	1889 mm
Outside dia.	10.7"	272 mm
Piston weight	275 lbs	125 kg



HYPER 141 DTH HAMMER



Technical Specification

Robit® HYPER 141

Valveless Hammer 350 mm (13¾") - 508 mm (20") dia. Holes

The Robit Hyper 141 hammer is a valveless DTH Hammer designed to operate over a wide range of operating pressures. The Hyper 141 is supplied with a 6¾" API regular pin backhead as standard. The Hyper 141 is fitted with a positive seating Water Check Valve and is supplied as standard, fitted with a Solid Choke. The Hyper 141 is primarily designed to be used with the Numa 125, but other shanks will be considered on request.

Component parts

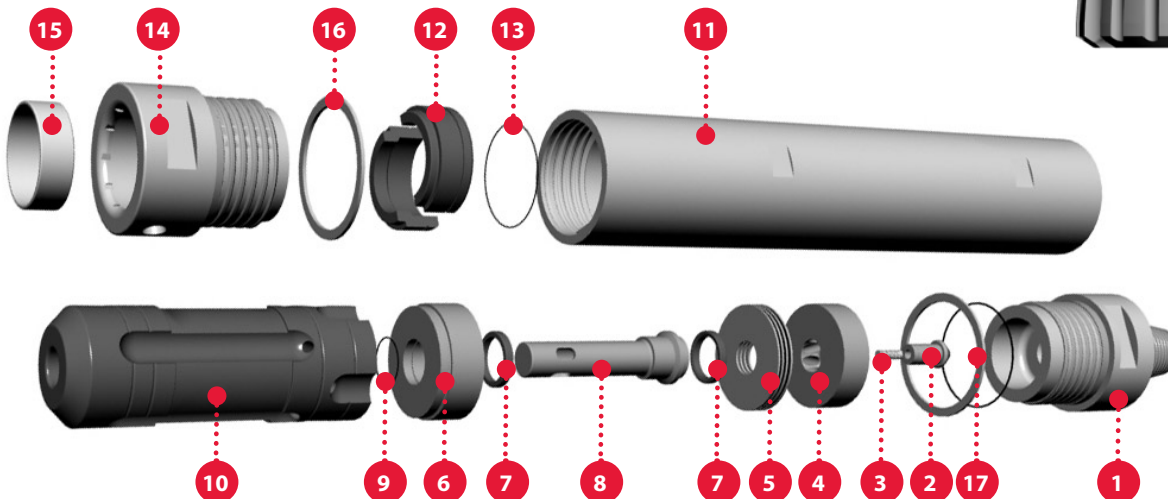
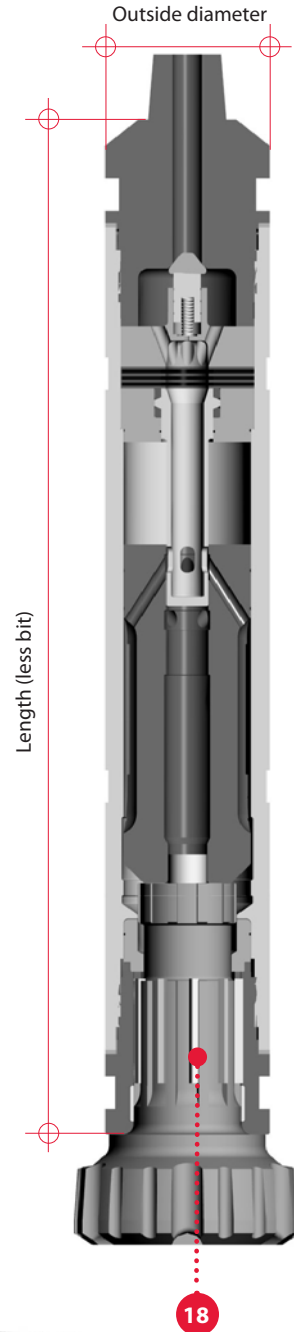
Ref	Description	Part number
1	Backhead	HS1413880M
2	Check Valve	HS1412108
3	Check Valve Spring	HS1412110
4	Diverter	HS1414120
5	Compression Buffer	HS1414128
6	Control Tube Holder	HS1414131
7	Control Tube Buffers (2)	HS1414129
8	Control Tube	HS1414130
9	Control Tube "O" Ring	HS1414130A
10	Piston	HS1414103125
11	Wearsleeve	HS1414100
12	Bit Retainer (pair)	HS1414137125
13	Bit Retainer "O" Ring	HS1414137AST
14	Chuck (N125 C/W drive plate slot)	HS1414135125
15	Chuck Bearing	HS1414135125BE
16	Breakout Washer (chuck)	HS1414126
17	Breakout Washer (Backhead)	HS1414126
18	Drive Plate N125 (10)	DP125
Complete Hammer		BR141H01

Air consumption (Pressure at Compressor)

PSI	BAR	m ³ /min	ft ³ /min
100	6.9	20.2	715
150	10.3	37.1	1311
200	13.8	57.1	2018
250	17.2	80.0	2821

Hammer specification

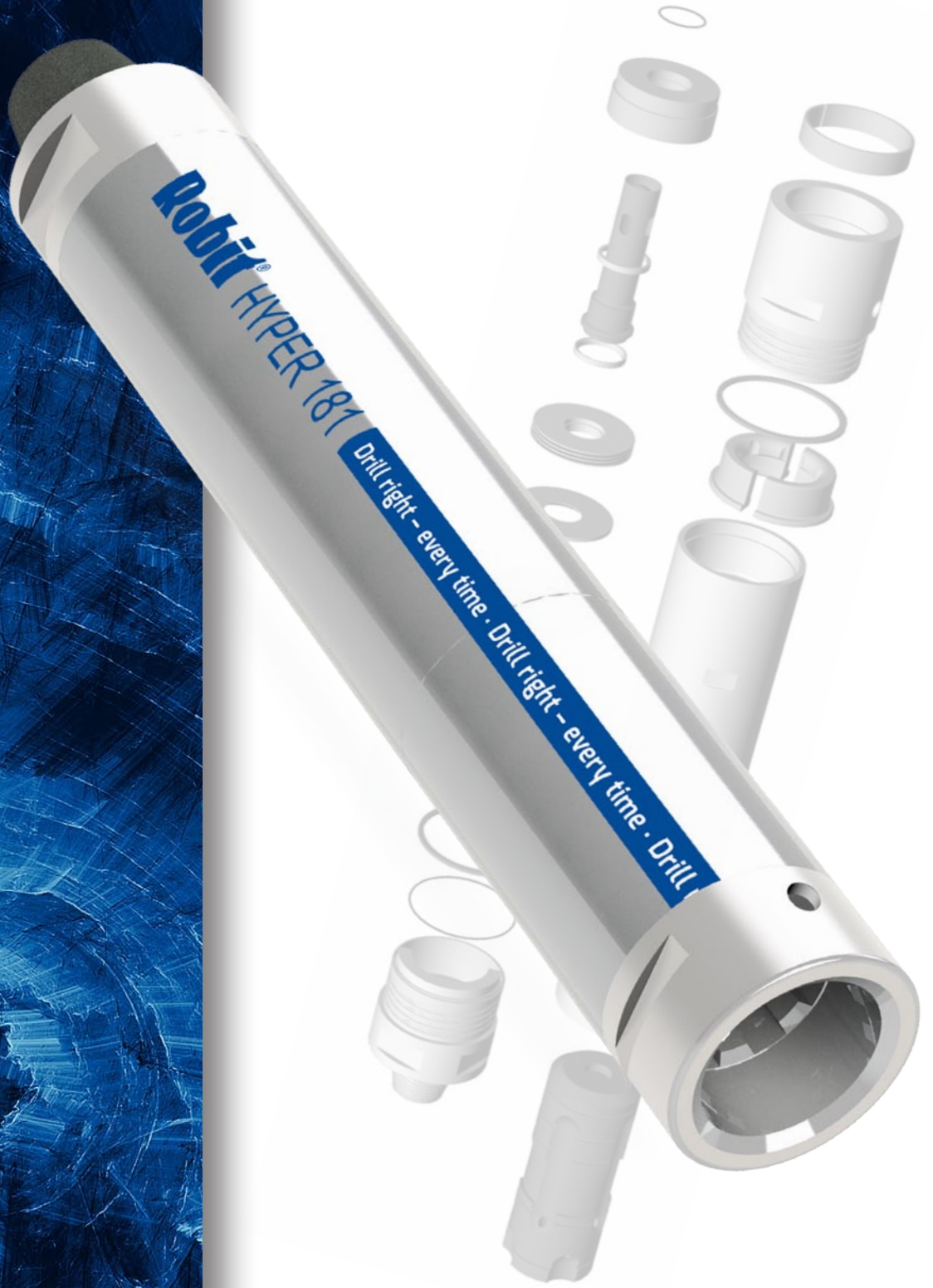
	Imperial	Metric
Weight (less bit)	2420 lbs	1100 kg
Length (less bit)	76.4"	1941 mm
Outside dia.	12.6"	320 mm
Piston weight	414 lbs	188 kg



HYPER 181

DTH HAMMER

SD18



Technical Specification

Robit® HYPER 181 (SD18)

Valveless Hammer 458 mm (18") - 660 mm (26") dia. Holes

The Robit Hyper 181 hammer is a valveless DTH Hammer designed to operate efficiently at pressures ranging from 7 to 15.5 bar (100 to 225 psi). The Hyper 181 is supplied with a 8 $\frac{5}{8}$ " api reg pin backhead as standard but a 8 $\frac{5}{8}$ " api reg box backhead can be supplied. In addition to this Hyper 181 SD18 model, the hammer can easily be modified to accept bits with Numa 180 and QL200 shank design by simply replacing the Chuck, Piston, Bit retainer and Bearing.

Component parts

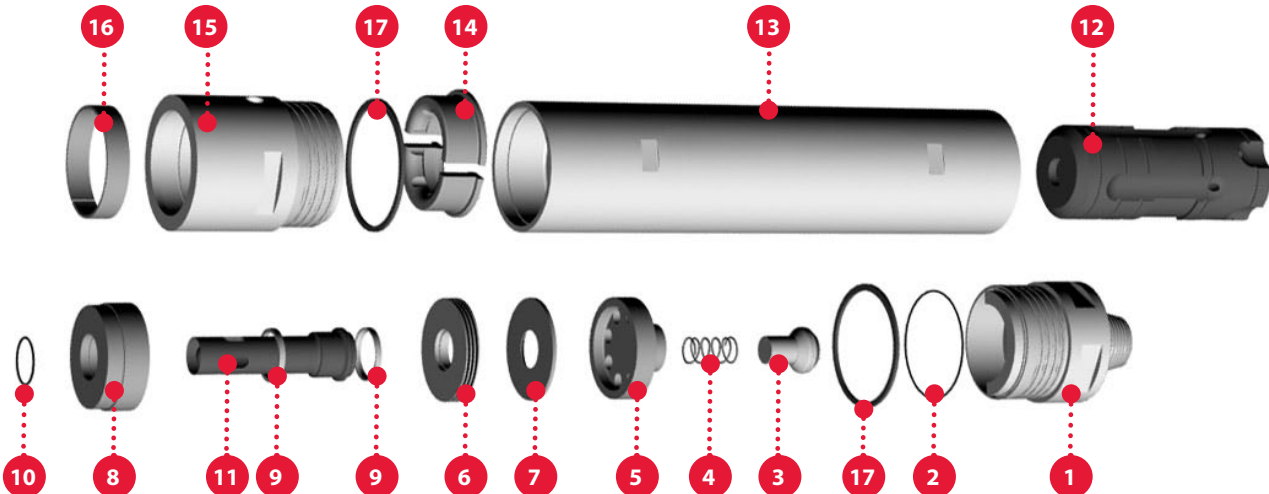
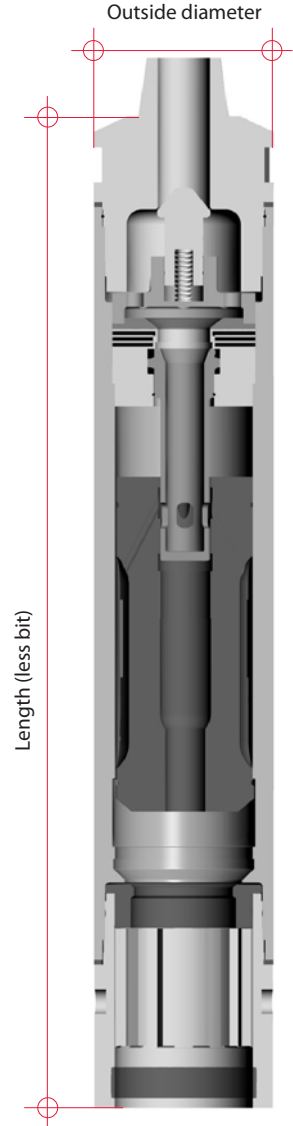
Ref	Description	Part number
1	Backhead	HSH1813882M
2	Backhead 'O' Ring	HSH18114
3	Check Valve	HSH18108
4	Check Valve Spring	HSH18110
5	Valve Chest	HSH18107
6	Compression Buffer	HSH18128
7	Buffer Cover	HSH18173
8	Tube Holder	HSH18131
9	Tube Buffers (2)	HSH18129
10	Tube 'O' Ring	HSH18130A
11	Control Tube	HSH18130
12	Piston	HSH18103096
13	Wearsleeve	HSH18100
14	Bit Retaining Ring	HSH18137096
15	Chuck	HSH18135096
16	Chuck Bearing	HSH18135096BE
17	Breakout Washer	HSH18126
Complete Hammer		BR181H02

Air consumption (Pressure at Compressor)

PSI	BAR	m ³ /min	ft ³ /min
100	6.9	30.8	1088
125	8.6	43.1	1520
150	10.3	56.6	1999
175	12.0	71.3	2518
200	13.8	87.1	3077
225	15.5	103.4	3672

Hammer specification

	Imperial	Metric
Weight (less bit)	3545 lbs	1608 kg
Length (less bit)	88.75"	2255 mm
Outside dia.	16"	406 mm
Piston weight	730 lbs	330 kg



HYPHER 181

DTH HAMMER

QL200



Technical Specification

Robit® HYPER 181 (QL200)

Valveless Hammer 458 mm (18") - 660 mm (26") dia. Holes

The Robit Hyper 181 QL200 hammer is a valveless DTH hammer designed to operate efficiently at pressures ranging from 7 to 15.5 bar (100 to 225 psi). The Hyper 181 QL200 is supplied with a 8 $\frac{1}{8}$ " api reg pin backhead as standard but a 8 $\frac{1}{8}$ " api reg box backhead can be supplied. In addition to the standard Hyper 181 button bits, the Hyper 181 QL200 can easily be modified to accept bits with Mission SD18 and N180 shank design by simply replacing the Chuck, Piston, Bit retainer and Bearing.

Component parts

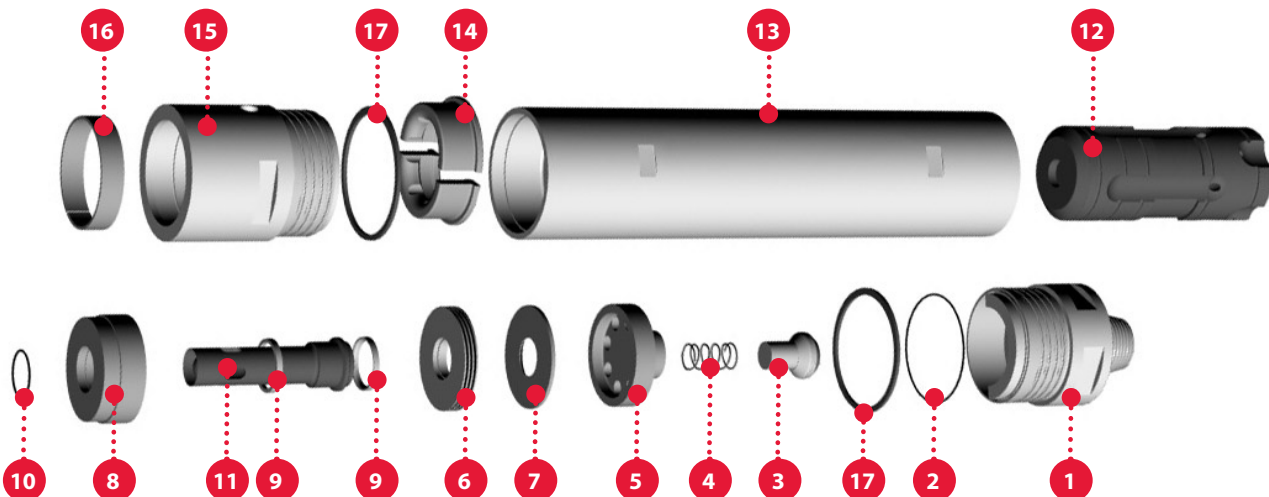
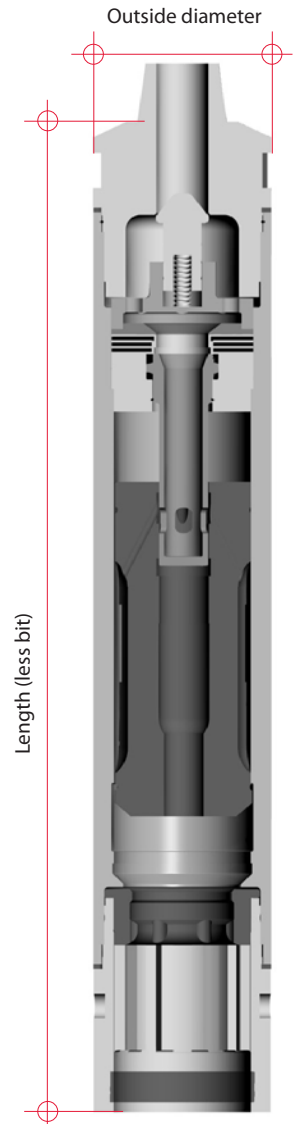
Ref	Description	Part number
1	Backhead	HSH1813882M
2	Backhead 'O' Ring	HSH18114
3	Check Valve	HSH18108
4	Check Valve Spring	HSH18110
5	Valve Chest	HSH18107
6	Compression Buffer	HSH18128
7	Buffer Cover	HSH18173
8	Tube Holder	HSH18131
9	Tube Buffers (2)	HSH18129
10	Tube 'O' Ring	HSH18130A
11	Control Tube	HSH18130
12	Piston	HSH18103102
13	Wearsleeve	HSH18100
14	Bit Retaining Ring	HSH18137102
15	Chuck	HSH18135102
16	Chuck Bearing	HSH18135102BE
17	Breakout Washer	HSH18126
Complete Hammer		BR181H05

Air consumption (Pressure at Compressor)

PSI	BAR	m ³ /min	ft ³ /min
100	6.9	30.8	1088
125	8.6	43.1	1520
150	10.3	56.6	1999
175	12.0	71.3	2518
200	13.8	87.1	3077
225	15.5	103.4	3672

Hammer specification

	Imperial	Metric
Weight (less bit)	3545 lbs	1608 kg
Length (less bit)	84.5"	2147 mm
Outside dia.	16"	406 mm
Piston weight	730 lbs	330 kg



HYPHER 181S DTH HAMMER QL200S



Technical Specification

Robit® HYPER 181S (QL200S)

Valveless Hammer 724 mm (28½") - 864 mm (34") dia. Holes

The Robit Hyper 181S hammer is a valveless DTH hammer designed to operate efficiently at pressures ranging from 7 to 15.5 bar (100 - 225 psi). The Hyper 181 is supplied with a 8½" API regular pin backhead as standard but a 8½" API regular box backhead can be supplied.

Component parts

Ref	Description	Part number
1	Backhead 8½" Reg. Pin	HSH1813882M
2	Backhead 'O' Ring	HSH18114
3	Check Valve	HSH18108
4	Check Valve Spring	HSH18110
5	Valve Chest	HSH18107
6	Compression Buffer	HSH18128
7	Buffer Cover	HSH18173
8	Tube Holder	HSH18131
9	Tube Buffers (2)	HSH18129
10	Tube 'O' Ring	HSH18130A
11	Control Tube	HSH18130
12	Piston	HSH18103180
13	Wearsleeve	HSH18100
14	Bit Retaining Ring	HSH18137101
15	Chuck	HSH18135101
16	Chuck Bearing	HSH18135101BE
17	Chuck Bearing	HSH18135101BEAC
18	Breakout Washers (2)	HSH18126

Complete Hammer

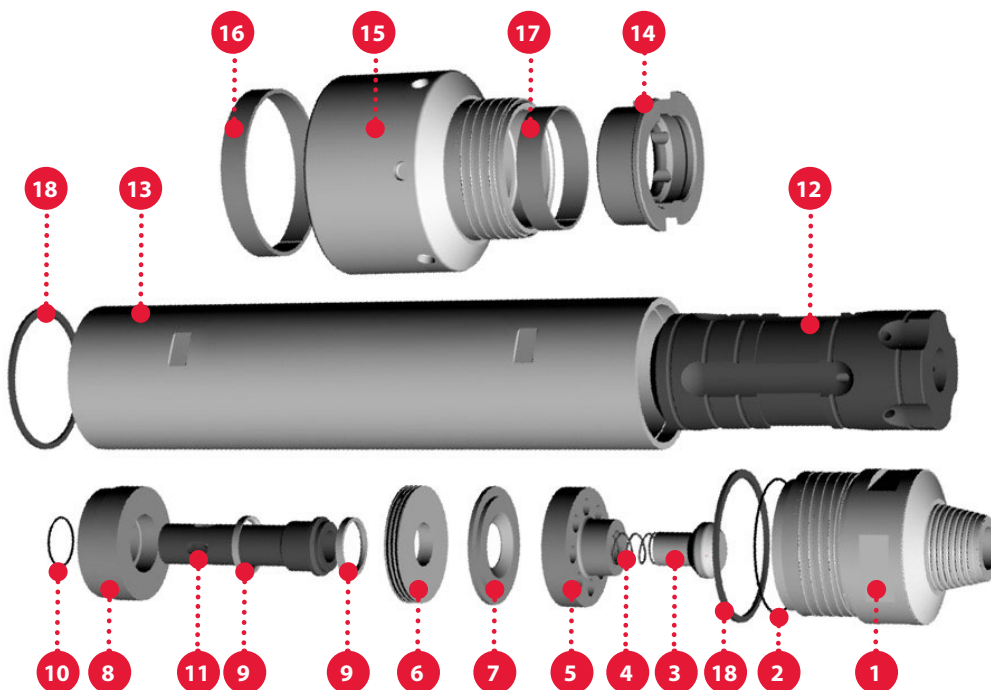
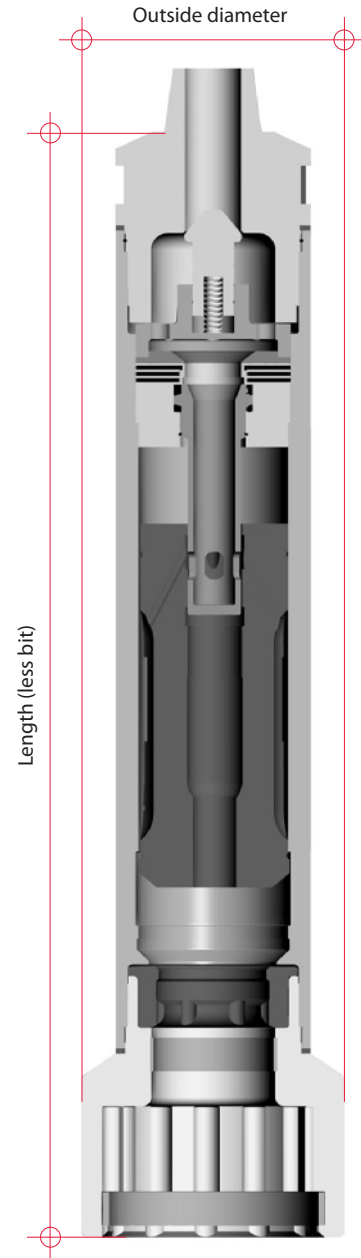
BR181H04

Air consumption (Pressure at Compressor)

PSI	BAR	m ³ /min	ft ³ /min
100	6.9	31.1	1097
150	10.3	57.1	2016
175	12.0	71.9	2541
200	13.8	87.9	3105
225	15.5	104.9	3705

Hammer specification

	Imperial	Metric
Weight (less bit)	3846 lbs	1748 kg
Length (less bit)	90.66"	2303 mm
Outside dia.	16"	406 mm
Piston weight	730 lbs	330 kg



HYPHER 241 DTH HAMMER



Technical Specification

Robit® HYPER 241

Valveless Hammer 610 mm (24") - 864 mm (34") dia. Holes

The Robit Hyper 241 hammer is a valveless DTH hammer designed to operate efficiently at pressures ranging from 7 bar to 15 bar (100 psi to 225 psi). The hammer is supplied with an 8 $\frac{5}{8}$ " api reg pin Backhead as standard or an 8 $\frac{5}{8}$ " api reg box thread can be supplied also. A positive seating check valve is fitted and the Hyper 241 is Supplied to suit N240 shank type Button Bits as standard.

Component parts

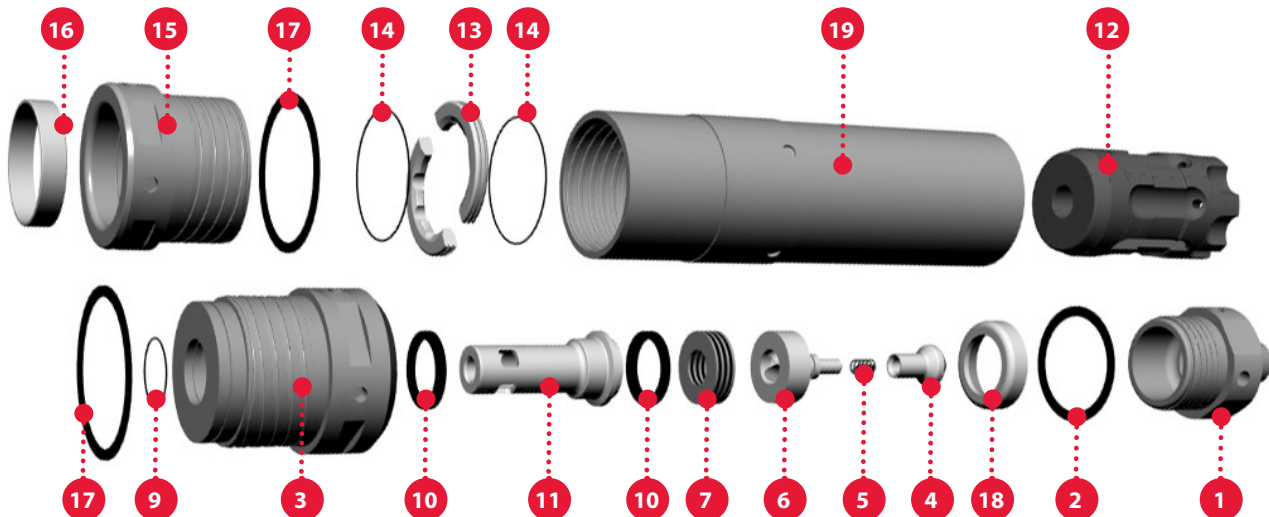
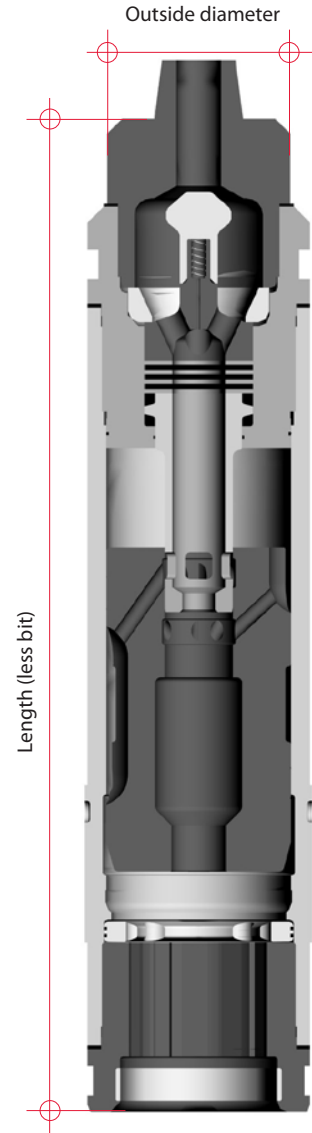
Ref	Description	Part number
1	Backhead Adaptor 8 $\frac{5}{8}$ " reg Pin	HSH2413682M
2	Backhead Adaptor Breakout Washer	HSH24127
3	Backhead	HSH24138
4	Check Valve	HSH18108
5	Check Valve Spring	HSH24110
6	Valve Chest	HSH24104
7	Compression Buffer	HSH24128
8	Backhead "O" Ring	HSH241114
9	Internal Backhead "O" Ring	HSH241114A
10	Tube Buffers (2)	HSH24129
11	Control Tube	HSH24130
12	Piston	HSH24103240
13	Bit Retaining Ring	HSH24137240
14	Bit Retainer "O" Ring (2)	HSH24137A240
15	Chuck	HSH24135240
16	Chuck Bearing	HSH24135240BE
17	Breakout Washer Backhead & Chuck	HSH24125
18	Internal Washer Adaptor	HSH24106
19	Wearsleeve	HSH24100
Complete Hammer		BR241H01

Air consumption (Pressure at Compressor)

PSI	BAR	m ³ /min	ft ³ /min
100	6.9	64.6	2281
125	8.6	90.3	3188
150	10.3	118.7	4191
175	12.0	149.5	5281
200	13.8	182.7	6452
225	15.5	218	7699

Hammer specification

	Imperial	Metric
Weight (less bit)	5522 lbs	2510 kg
Length (less bit)	92.7"	2355 mm
Outside dia.	21"	533 mm
Piston weight	1276 lbs	580 kg



HYPHER 241S DTH HAMMER



Technical Specification

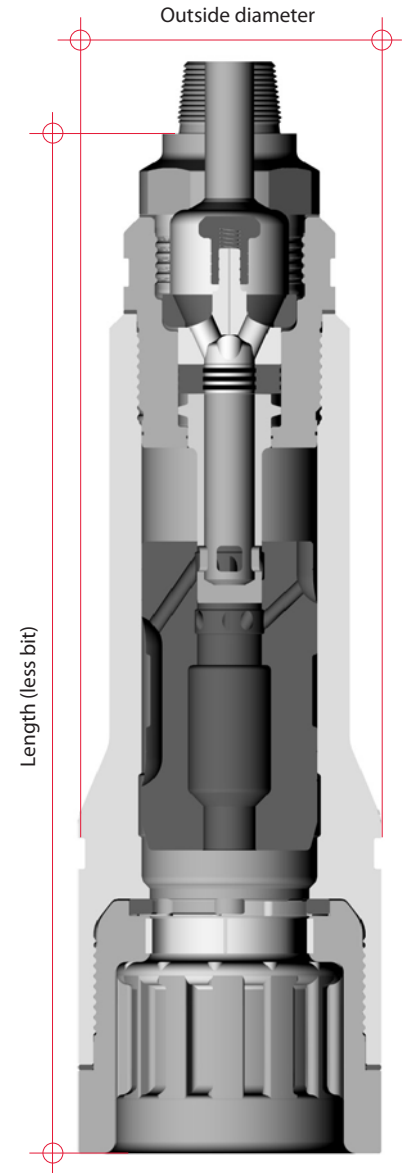
Robit® HYPER 241S

Valveless Hammer 864 mm (34") - 1090 mm (43") dia. Holes

The Robit Hyper 241S hammer is a valveless DTH hammer designed to operate efficiently at pressures ranging from 7 to 15 bar (100 - 220 psi). The Hyper 241S is supplied with a 10" beco pin backhead as standard, but an 8" box backhead can be supplied. A positive seating check valve is fitted. The Hyper 241S is supplied to suit the XL24/32 shank as standard.

Component parts

Ref	Description	Part number
1	Backhead Adaptor 10" Beco Pin	HSH24138AD083M
2	Breakout washer (adaptor)	HSH24127
3	Internal Washer Adaptor	HSH24106
4	Check Valve	HSH24108
5	Check Valve Spring	HSH24110
6	Valve Chest	HSH24104
7	Compression Buffer	HSH24128
8	Control Tube Buffer (2)	HSH24129
9	Control Tube	HSH24130
10	Backhead	HSH24138
11	Breakout Washer (backhead)	HSH24125
12	Backhead sealing "O" ring	HSH241114B
13	Piston	HSH241S03XL24
14	Wearsleeve	HSH241S00
15	Breakout Washer (chuck)	HSH241S26
16	Bit Retaining Ring	HSH241S37XL24
17	Chuck Bearing	HSH241S35XL24BE
18	Chuck	HSH241S35XL24
Complete Hammer		BR241SH01

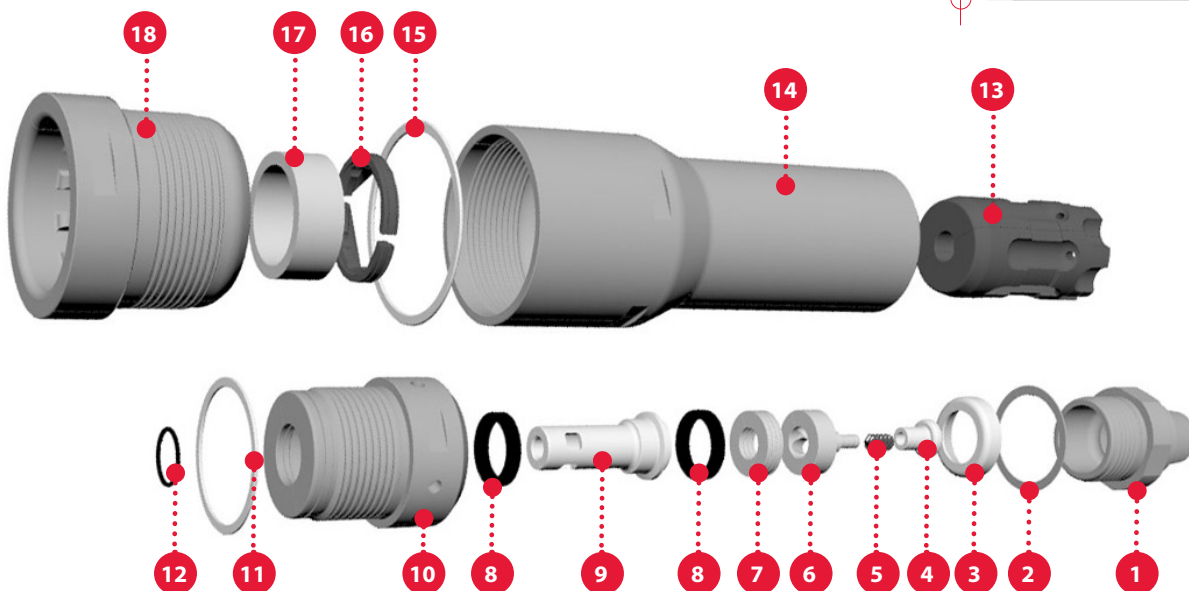


Air consumption (Pressure at Compressor)

PSI	BAR	m ³ /min	ft ³ /min
100	6.9	64.6	2281
125	8.6	90.3	3188
150	10.3	118.7	4191
175	12.0	149.5	5281
200	13.8	182.7	6452
225	15.5	218	7699

Hammer specification

	Imperial	Metric
Weight (less bit)	8800 lbs	4000 kg
Length (less bit)	100"	2540 mm
Outside dia.	29.3"	745 mm
Piston weight	1276 lbs	580 kg



HYPER 331 DTH HAMMER



Technical Specification

Robit[®] HYPER 331

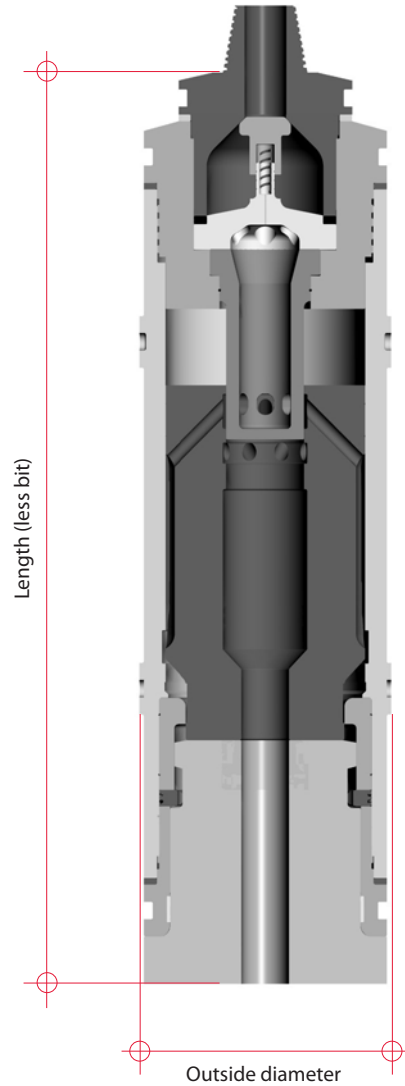
Valveless Hammer 838 mm (33") - 1320 mm (52") dia. Holes (other sizes available on request)

The Hyper 331 DTH hammer is designed for drilling 838 mm - 1320 mm (33 - 52") diameter holes over a wide range of operating air pressures. The Hyper 331 is supplied with a 10" BECO as standard but other connections are available on request.

The Hyper 331 is designed to transfer maximum energy to the button bit and comes with highly durable shank as standard.

Component parts

Ref	Description	Part number
1	Backhead adaptor	HSH3313683M
2	Breakout washer	HSH33127
3	Compression buffer	HSH33128
4	Check valve	HSH18108
5	Check valve spring	HSH18110
6	Diverter	HSH33120
7	Control tube	HSH33130
8	Backhead	HSH33138
9	Backhead internal 'O' ring	HSH33114A
10	Backhead breakout washer	HSH33126
11	Piston	HSH33103
12	Wearsleeve	HSH33100
13	Bit bearing 'O' ring (2)	HSH33186A
14	Bit bearing	HSH33186
15	Bit retainer 'O' ring (2)	HSH33137A
16	Bit retainer	HSH33137
17	Chuck breakout washer	HSH33126
18	Chuck	HSH33135
19	Chuck bearing	HSH33135BE
Complete Hammer		BR331H01

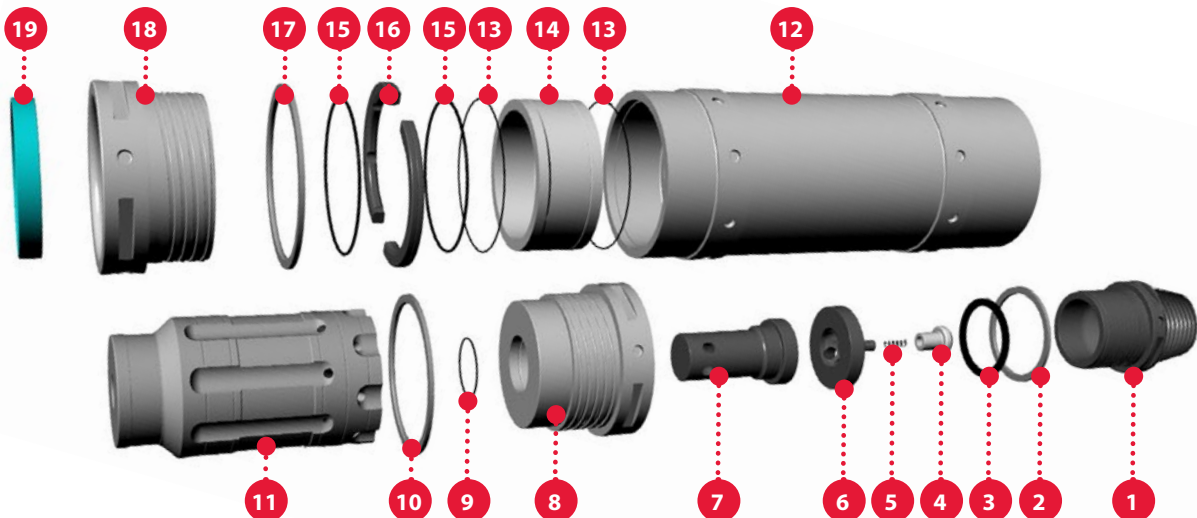


Air consumption

PSI	BAR	m ³ /min	ft ³ /min
100	6.9	77.68	2743.26
125	8.6	108.57	3833.83
150	10.3	142.71	5039.70
175	12.0	179.84	6350.74
200	13.8	219.72	7759.12
225	15.5	262.18	9258.52

Hammer specification

	Imperial	Metric
Weight (less bit)	12273 lbs	5567 Kgs
Length (less bit)	100"	2540 mm
Outside dia.	29.0"	736.6 mm
Piston weight	3414 lbs	1552 Kgs
Button Bit type	H331	



Robit®

ROBIT PLC

Vikkiniityntie 9

FI-33880 LEMPÄÄLÄ (TAMPERE)

FINLAND

Tel: +358 3 3140 3400

E-mail: sales@robitgroup.com

<http://www.robitgroup.com>

Your distributor:



Robit reserves all rights to any changes in the products and the specifications without prior notice.
Printed: September 2018
Copyright © 2018 by Robit Plc

FURTHER. FASTER.