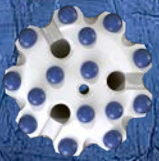


Robit Rbit™ series

The New Standard for Top Hammer Drilling from Robit



New transition face ensuring better energy transfer



Optimized button layout maximizing rock contact



Wider flushing grooves allowing better flow of cuttings



Robit Rbit™ series

Eco-Friendly Green Steel

All of the Robit button bits are manufactured of new 100% recyclable steel. In the environment-friendly steel production process, the CO₂ emissions have been reduced by 80% and 95% of the waste is recycled including the process smoke which is filtered. The new steel grade gives even more uniform properties and improved fatigue strength which is crucial in rock drilling process.

- Specially designed for Robit
- Better fatigue resistance
- 100% recyclable
- 80% less CO₂ emissions
- Process smoke filtrated and recycled
- 95% of waste recycled



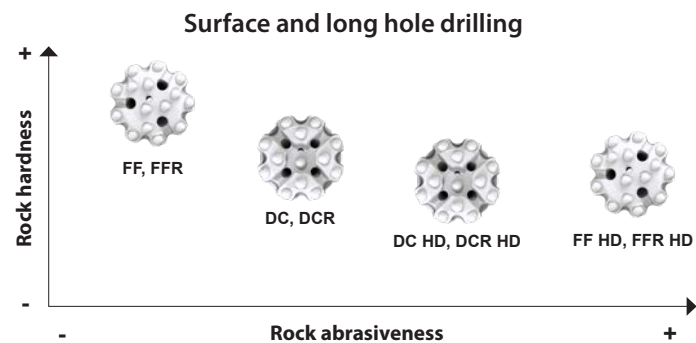
Advanced face types

FF = Flat Face for medium and hard rock conditions

FF HD = Flat Face Heavy Duty model for more abrasive conditions

DC = Drop Center model for straighter holes with maximum flushing properties. (For soft and medium hard rock for speed drilling)

DC HD = Drop Center Heavy Duty model for more abrasive conditions



Revolutionary transition face

Transition face with rounded edges enables optimized button layout and new functional features to the bit.



Optimized body types

Standard body

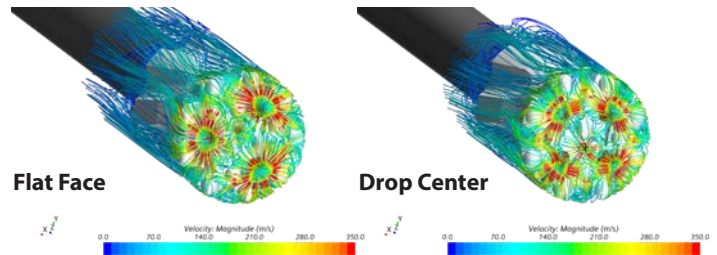


Retrac body



Rbit™ series specifications

Computational Fluid Dynamics (CFD) simulation images show the efficient flushing properties of new Rbit™ series.



Flushing grooves in face and on side

Improved face flushing hole

High quality tungsten carbide = TC SuperDome or Ballistic buttons

Gauge-button angle 35°

New optimal retrac hard top body

Maximized flushing grooves

Wear resistant heat treated steel body made from R - Retrac teeth high quality Scandinavian steel